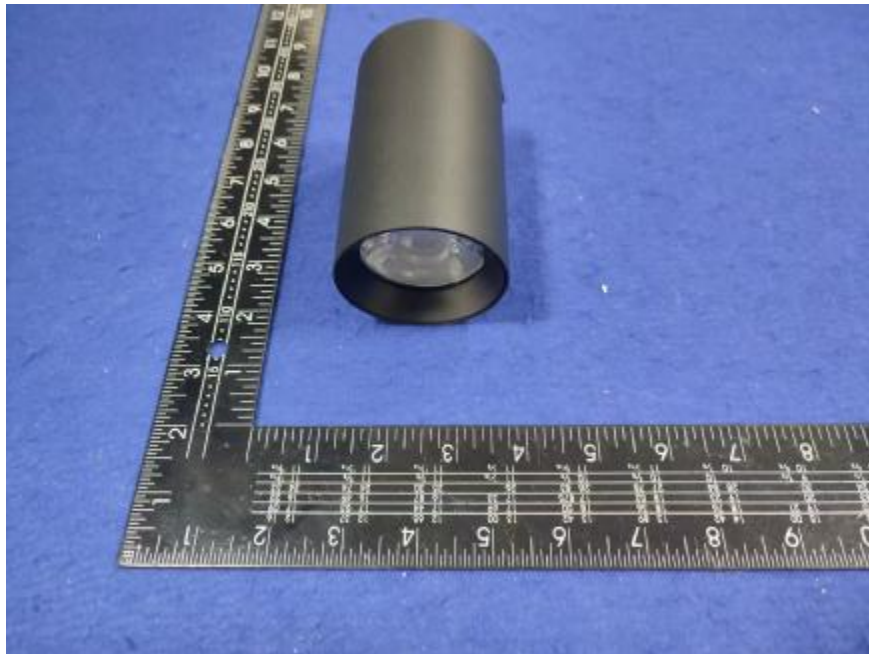


Luminaire Photograph



Light Output Ratio:	89.0%	
Luminaire Power:	14.84 W	
SHR Nominal:	0.75	Calculated using the TM5
SHR Maximum:	0.75	fine grid method.

C Range: 0 - 360DEG
C Interval: 30.0DEG
Test Speed: HIGH
Temperature: 25.3 °C
Operators: zoe
Test Date: 2025-01-02

Range: 0 - 180DEG
Interval: 1.0DEG
Test System: EVERFINE GO-SPEX500_V1 SYSTEM V2.00.461
Humidity: 65.0%
Test Distance: 3.160m [K=1.0000]
Remarks: LAMP: BXRE-30G10TH-A-83 Ra:90
LENS: PM-0132C 50R
NOT DRIVER: 48V
30minutes warm-up

LUMINOUS INTENSITY DISTRIBUTION DIAGRAM

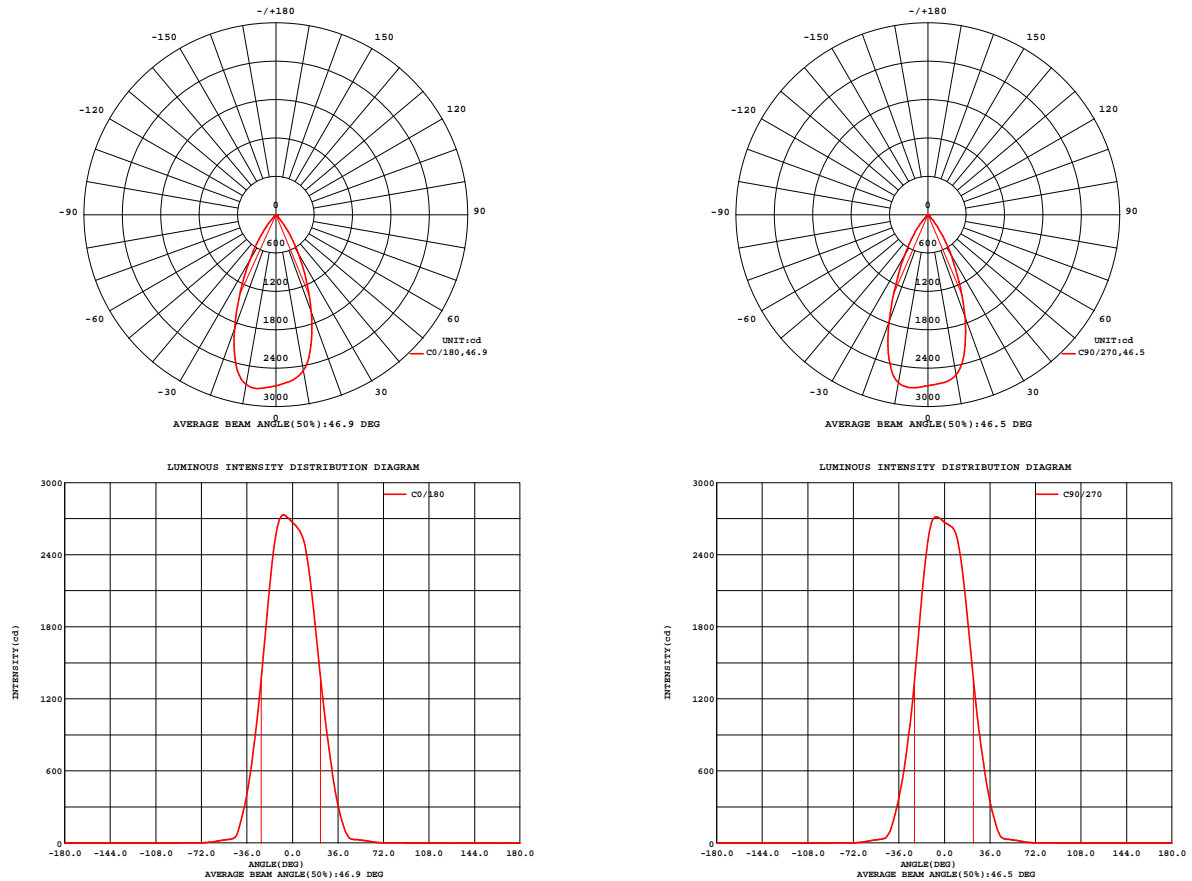


Fig. C0/C180

Fig. C90/C270

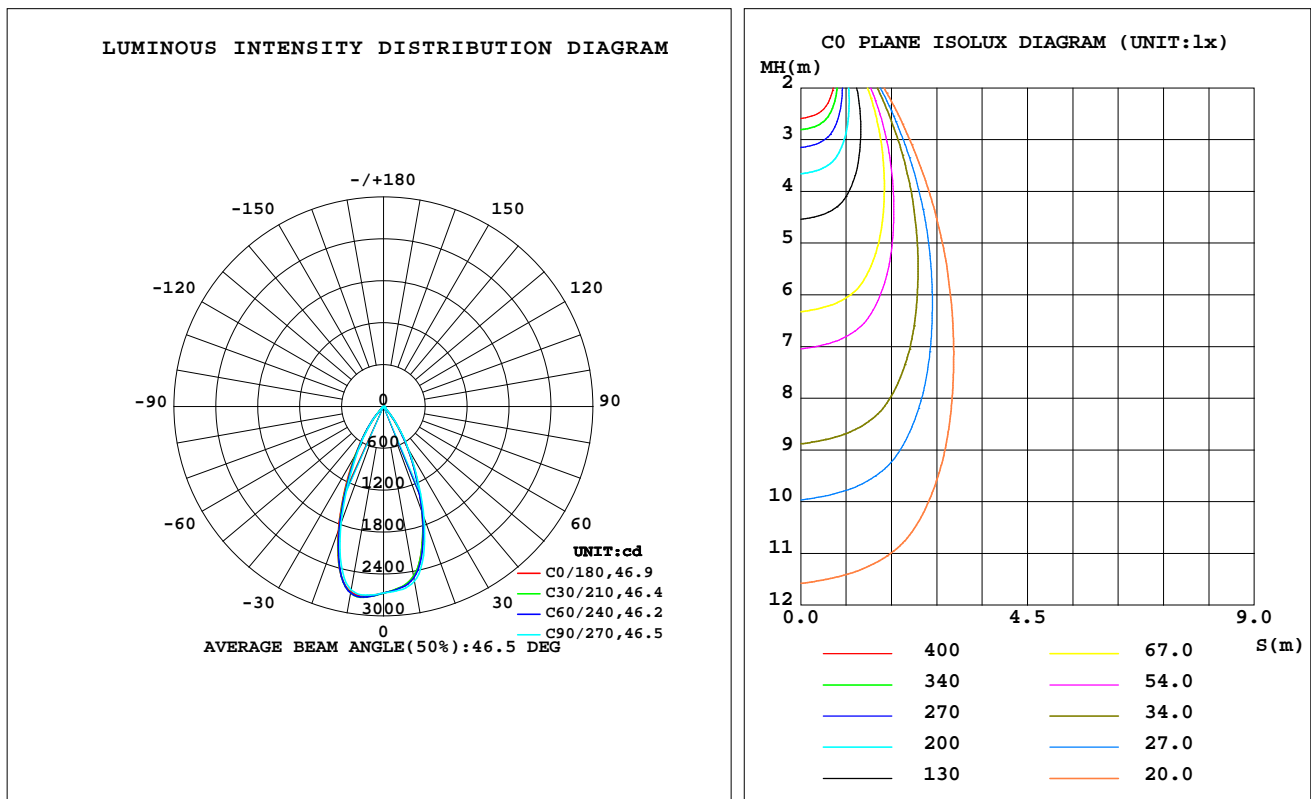
C Range: 0 - 360DEG
 C Interval: 30.0DEG
 Test Speed: HIGH
 Temperature: 25.3 °C
 Operators: zoe
 Test Date: 2025-01-02

Range: 0 - 180DEG
 Interval: 1.0DEG
 Test System: EVERFINE GO-SPEX500_V1 SYSTEM V2.00.461
 Humidity: 65.0%
 Test Distance: 3.160m [K=1.0000]
 Remarks: LAMP: BXRE-30G10TH-A-83 Ra: 90
 LENS: PM-0132C 50R
 NOT DRIVER: 48V
 30minutes warm-up

LUMINAIRE PHOTOMETRIC TEST REPORT

Test:U:47.997V I:0.3091A P:14.836W PF:1.0000 Freq:49.99Hz Lamp Flux:1994.65x1 lm		
NAME: OZ48-SA-HE-64	TYPE:	WEIGHT:
SPEC.: 3000K	DIM.:	SERIAL No.: 2501020008
MFR.: RISE	SUR.: 0.002826m2	Shielding Angle:

DATA OF LAMP		PHOTOMETRIC DATA Eff: 119.72 lm/W			
MODEL	Brideglux	Imax(cd)	2752	S/MH(C0/180)	0.76
NOMINAL POWER(W)	15	LOR(%)	89.0	S/MH(C90/270)	0.73
RATED VOLTAGE(V)	48	TOTAL FLUX(lm)	1776.2	UP,DN(C0-180)	0.0,43.4
NOMINAL FLUX(lm)	1994.65	CIE CLASS	DIRECT	UP,DN(C180-360)	0.0,45.6
LAMPS INSIDE	1	up(%)	0.0	CIBSE SHR NOM	0.75
TEST VOLTAGE(V)	48	down(%)	89.0	CIBSE SHR MAX	0.75



C Range: 0 - 360DEG
C Interval: 30.0DEG
Test Speed: HIGH
Temperature:25.3℃
Operators:zoe
Test Date:2025-01-02

Range: 0 - 180DEG
Interval: 1.0DEG
Test System:EVERFINE GO-SPEX500_V1 SYSTEM V2.00.461
Humidity:65.0%
Test Distance:3.160m [K=1.0000]
Remarks: LAMP:BXRE-30G10TH-A-83 Ra:90
LENS:PM-0132C 50R
NOT DRIVER:48V
30minutes warm-up

ZONAL FLUX DIAGRAM

ZONAL FLUX DIAGRAM:

	C0	C45	C90	C135	C180	C225	C270	C315		zone	total	%lum,lamp
10	2475	2481	2541	2621	2693	2715	2667	2556	0- 10	252.9	252.9	14.2,12.7
20	1615	1620	1699	1837	1896	1861	1782	1710	10- 20	622.4	875.3	49.3,43.9
30	700.8	706.7	732.2	801.6	826.0	791.8	734.4	727.2	20- 30	550.1	1425	80.3,71.5
40	158.3	169.7	184.0	185.6	211.3	210.1	195.3	173.1	30- 40	267.3	1693	95.3,84.9
50	28.41	30.75	30.25	29.89	29.45	32.69	31.30	29.86	40- 50	53.58	1746	98.3,87.6
60	15.13	16.12	15.61	15.13	14.62	15.74	15.54	15.78	50- 60	21.48	1768	99.5,88.6
70	2.617	2.789	2.526	2.627	2.417	2.761	2.437	2.829	60- 70	7.558	1775	100,89
80	0.0857	0.0702	0.0773	0.0676	0.0708	0.0639	0.0709	0.0598	70- 80	0.8034	1776	100,89
90	0	0	0	0	0	0	0	0	80- 90	0.0561	1776	100,89
100	0	0	0	0	0	0	0	0	90-100	0	1776	100,89
110	0	0	0	0	0	0	0	0	100-110	0	1776	100,89
120	0	0	0	0	0	0	0	0	110-120	0	1776	100,89
130	0	0	0	0	0	0	0	0	120-130	0	1776	100,89
140	0	0	0	0	0	0	0	0	130-140	0	1776	100,89
150	0	0	0	0	0	0	0	0	140-150	0	1776	100,89
160	0	0	0	0	0	0	0	0	150-160	0	1776	100,89
170	0	0	0	0	0	0	0	0	160-170	0	1776	100,89
180	0	0	0	0	0	0	0	0	170-180	0	1776	100,89
DEG	LUMINOUS INTENSITY:cd									UNIT:lm		

C Range: 0 - 360DEG
C Interval: 30.0DEG
Test Speed: HIGH
Temperature:25.3℃
Operators:zoe
Test Date:2025-01-02

Range: 0 - 180DEG
Interval: 1.0DEG
Test System:EVERFINE GO-SPEX500_V1 SYSTEM V2.00.461
Humidity:65.0%
Test Distance:3.160m [K=1.0000]
Remarks: LAMP:BXRE-30G10TH-A-83 Ra:90
LENS:PM-0132C 50R
NOT DRIVER:48V
30minutes warm-up

LUMINANCE LIMITATION CURVES

Test:U:47.997V I:0.3091A P:14.836W PF:1.0000 Freq:49.99Hz
Lamp Flux:1994.65x1 lm

NAME: OZ48-SA-HE-64

TYPE:

WEIGHT:

SPEC.: 3000K

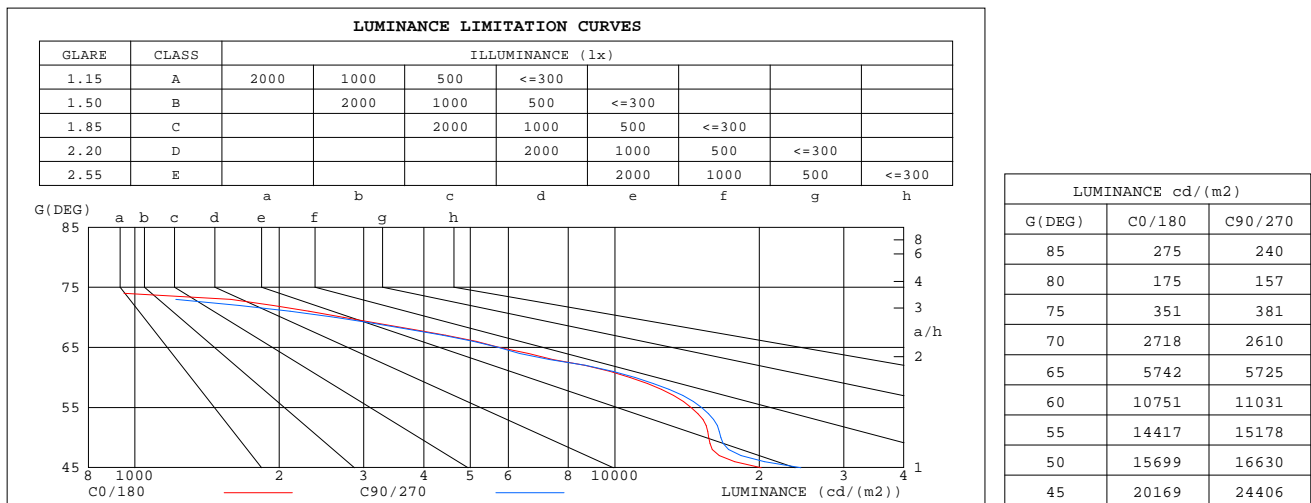
DIM.:

SERIAL No.: 2501020008

MFR.: RISE

SUR.: 0.002826m2

Shielding Angle:



C Range: 0 - 360DEG
C Interval: 30.0DEG
Test Speed: HIGH
Temperature:25.3℃
Operators:zoe
Test Date:2025-01-02

Range: 0 - 180DEG
Interval: 1.0DEG
Test System:EVERFINE GO-SPEX500_V1 SYSTEM V2.00.461
Humidity:65.0%
Test Distance:3.160m [K=1.0000]
Remarks: LAMP:BXRE-30G10TH-A-83 Ra:90
LENS:PM-0132C 50R
NOT DRIVER:48V
30minutes warm-up

CU AND LUMINAIRE BUDGETARY ESTIMATE DIAGRAM

Test:U:47.997V I:0.3091A P:14.836W PF:1.0000 Freq:49.99Hz
Lamp Flux:1994.65x1 lm

NAME: OZ48-SA-HE-64

TYPE:

WEIGHT:

SPEC.: 3000K

DIM.:

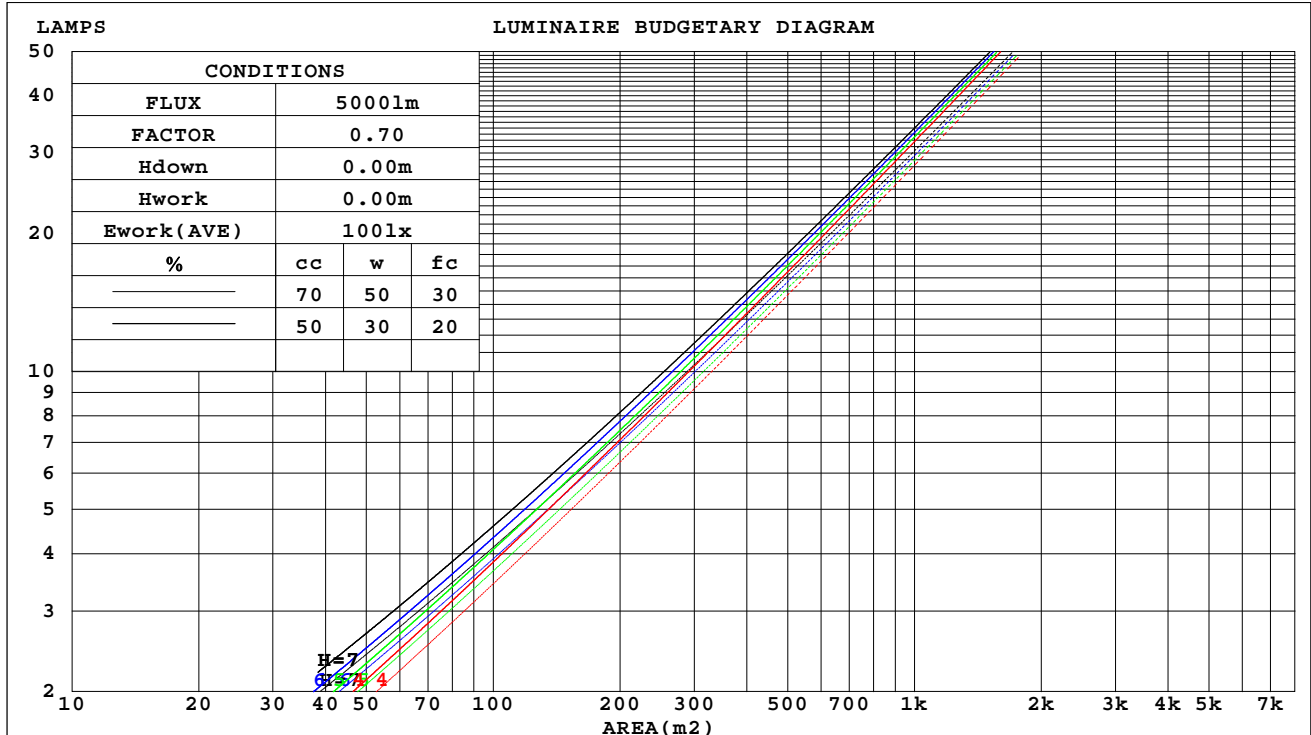
SERIAL No.: 2501020008

MFR.: RISE

SUR.: 0.002826m2

Shielding Angle:

cc	80%			70%			50%			30%			10%			0
w	50%	30%	10%	50%	30%	10%	50%	30%	10%	50%	30%	10%	50%	30%	10%	0
fc	20%			20%			20%			20%			20%			0
RCR	RCR:Room Cavity Ratio															



C Range: 0 - 360DEG
C Interval: 30.0DEG
Test Speed: HIGH
Temperature:25.3℃
Operators:zoe
Test Date:2025-01-02

Range: 0 - 180DEG
Interval: 1.0DEG
Test System:EVERFINE GO-SPEX500_V1 SYSTEM V2.00.461
Humidity:65.0%
Test Distance:3.160m [K=1.0000]
Remarks: LAMP:BXRE-30G10TH-A-83 Ra:90
LENS:PM-0132C 50R
NOT DRIVER:48V
30minutes warm-up

WEC AND CCEC

Test:U:47.997V I:0.3091A P:14.836W PF:1.0000 Freq:49.99Hz Lamp Flux:1994.65x1 lm		
NAME: OZ48-SA-HE-64	TYPE:	WEIGHT:
SPEC.: 3000K	DIM.:	SERIAL No.: 2501020008
MFR.: RISE	SUR.: 0.002826m2	Shielding Angle:

cc	80%			70%			50%			30%			10%			0
w	50%	30%	10%	50%	30%	10%	50%	30%	10%	50%	30%	10%	50%	30%	10%	0
fc	20%			20%			20%			20%			20%			0
RcR	RcR:Room Cavity Ratio Wall Exitance Coefficients(WEC)															
0.0																
1.0	.149	.085	.027	.143	.081	.026	.132	.076	.024	.121	.070	.022	.112	.065	.021	
2.0	.142	.078	.024	.137	.075	.023	.127	.071	.022	.119	.067	.021	.111	.063	.020	
3.0	.135	.072	.021	.130	.070	.021	.122	.066	.020	.115	.063	.019	.108	.060	.019	
4.0	.128	.066	.020	.124	.065	.019	.117	.062	.019	.111	.060	.018	.105	.057	.017	
5.0	.122	.062	.018	.119	.061	.018	.113	.059	.017	.107	.057	.017	.102	.055	.016	
6.0	.116	.058	.017	.113	.057	.016	.108	.055	.016	.103	.054	.016	.099	.052	.015	
7.0	.111	.055	.016	.109	.054	.015	.104	.053	.015	.100	.051	.015	.096	.050	.015	
8.0	.106	.052	.015	.104	.051	.014	.100	.050	.014	.096	.049	.014	.093	.048	.014	
9.0	.102	.049	.014	.100	.049	.014	.096	.048	.014	.093	.047	.013	.090	.046	.013	
10.0	.098	.047	.013	.096	.046	.013	.093	.046	.013	.090	.045	.013	.087	.044	.013	

cc	80%			70%			50%			30%			10%			0
w	50%	30%	10%	50%	30%	10%	50%	30%	10%	50%	30%	10%	50%	30%	10%	0
fc	20%			20%			20%			20%			20%			0
RCR	RCR:Room Cavity Ratio Ceiling Cavity Exitance Coefficients(CCEC)															
0.0	.170	.170	.170	.145	.145	.145	.099	.099	.099	.057	.057	.057	.018	.018	.018	
1.0	.152	.140	.130	.130	.120	.112	.089	.083	.077	.051	.048	.045	.016	.015	.015	
2.0	.138	.118	.102	.118	.102	.088	.081	.070	.061	.047	.041	.036	.015	.013	.012	
3.0	.126	.101	.081	.108	.087	.070	.074	.061	.049	.043	.035	.029	.014	.011	.010	
4.0	.117	.088	.066	.100	.076	.057	.069	.053	.040	.040	.031	.024	.013	.010	.008	
5.0	.108	.077	.054	.093	.067	.047	.064	.047	.033	.037	.027	.020	.012	.009	.007	
6.0	.102	.069	.046	.087	.060	.040	.060	.042	.028	.035	.025	.017	.011	.008	.006	
7.0	.096	.062	.039	.082	.054	.034	.057	.038	.024	.033	.022	.014	.011	.007	.005	
8.0	.090	.056	.033	.078	.049	.029	.054	.034	.020	.031	.020	.012	.010	.007	.004	
9.0	.086	.052	.029	.074	.045	.025	.051	.032	.018	.030	.019	.011	.010	.006	.004	
10.0	.082	.048	.025	.071	.042	.022	.049	.029	.016	.029	.017	.009	.009	.006	.003	

C Range: 0 - 360DEG
C Interval: 30.0DEG
Test Speed: HIGH
Temperature:25.3℃
Operators:zoe
Test Date:2025-01-02

Range: 0 - 180DEG
Interval: 1.0DEG
Test System:EVERFINE GO-SPEX500_V1 SYSTEM V2.00.461
Humidity:65.0%
Test Distance:3.160m [K=1.0000]
Remarks: LAMP:BXRE-30G10TH-A-83 Ra:90
LENS:PM-0132C 50R
NOT DRIVER:48V
30minutes warm-up

UGR(Unified Glare Rating) Table

Test:U:47.997V I:0.3091A P:14.836W PF:1.0000 Freq:49.99Hz Lamp Flux:1994.65x1 lm										
NAME: OZ48-SA-HE-64					TYPE:			WEIGHT:		
SPEC.: 3000K					DIM.:			SERIAL No.: 2501020008		
MFR.: RISE					SUR.: 0.002826m2			Shielding Angle:		
ceiling/cavity	0.7	0.7	0.5	0.5	0.3	0.7	0.7	0.5	0.5	0.3
walls	0.5	0.3	0.5	0.3	0.3	0.5	0.3	0.5	0.3	0.3
working plane	0.2	0.2	0.2	0.2	0.2	0.2	0.2	0.2	0.2	0.2
Room dimensions	Viewed crosswise					Viewed endwise				
x = 2H y = 2H	17.5	18.4	17.7	18.6	18.7	17.8	18.6	18.0	18.8	19.0
3H	17.4	18.2	17.6	18.4	18.6	17.6	18.4	17.9	18.6	18.8
4H	17.3	18.1	17.6	18.3	18.5	17.5	18.3	17.8	18.5	18.7
6H	17.2	17.9	17.5	18.2	18.4	17.4	18.2	17.7	18.4	18.6
8H	17.2	17.9	17.5	18.1	18.4	17.4	18.1	17.7	18.3	18.6
12H	17.1	17.8	17.4	18.0	18.3	17.4	18.0	17.7	18.3	18.6
4H 2H	17.3	18.1	17.6	18.3	18.5	17.6	18.3	17.8	18.5	18.8
3H	17.2	17.8	17.5	18.1	18.4	17.4	18.1	17.7	18.3	18.6
4H	17.1	17.7	17.4	18.0	18.3	17.3	17.9	17.7	18.2	18.5
6H	17.0	17.5	17.4	17.9	18.2	17.2	17.8	17.6	18.1	18.4
8H	16.9	17.4	17.3	17.8	18.2	17.2	17.7	17.6	18.0	18.4
12H	16.9	17.3	17.3	17.7	18.1	17.1	17.6	17.5	17.9	18.3
8H 4H	17.0	17.4	17.3	17.8	18.2	17.2	17.7	17.6	18.0	18.4
6H	16.8	17.2	17.3	17.6	18.1	17.1	17.5	17.5	17.9	18.3
8H	16.8	17.1	17.2	17.6	18.0	17.0	17.4	17.5	17.8	18.2
12H	16.7	17.0	17.2	17.5	17.9	17.0	17.3	17.4	17.7	18.2
12H 4H	16.9	17.3	17.3	17.7	18.1	17.1	17.6	17.5	17.9	18.3
6H	16.8	17.1	17.2	17.6	18.0	17.0	17.4	17.5	17.8	18.2
8H	16.7	17.0	17.2	17.5	17.9	17.0	17.3	17.4	17.7	18.2
Variations with the observer position at spacings(CIE Pub.117):										
S = 1.0H	+ 3.3 / - 6.9					+ 3.6 / - 7.1				
1.5H	+ 5.8 / - 5.8					+ 6.0 / - 6.1				
2.0H	+ 1.4 / - 3.6					+ 2.4 / - 3.4				

CIE Pub.117, 1995 lm Total Lamp Luminous Flux Correct (8log(F/F0) = 2.4)
Area: 0.002826 m2

C Range: 0 - 360DEG
C Interval: 30.0DEG
Test Speed: HIGH
Temperature:25.3℃
Operators:zoe
Test Date:2025-01-02

Range: 0 - 180DEG
Interval: 1.0DEG
Test System:EVERFINE GO-SPEX500_V1 SYSTEM V2.00.461
Humidity:65.0%
Test Distance:3.160m [K=1.0000]
Remarks: LAMP:BXRE-30G10TH-A-83 Ra:90
LENS:PM-0132C 50R
NOT DRIVER:48V
30minutes warm-up

UTILIZATION FACTORS TABLE

Test:U:47.997V I:0.3091A P:14.836W PF:1.0000 Freq:49.99Hz Lamp Flux:1994.65x1 lm		
NAME: OZ48-SA-HE-64	TYPE:	WEIGHT:
SPEC.: 3000K	DIM.:	SERIAL No.: 2501020008
MFR.: RISE	SUR.: 0.002826m2	Shielding Angle:

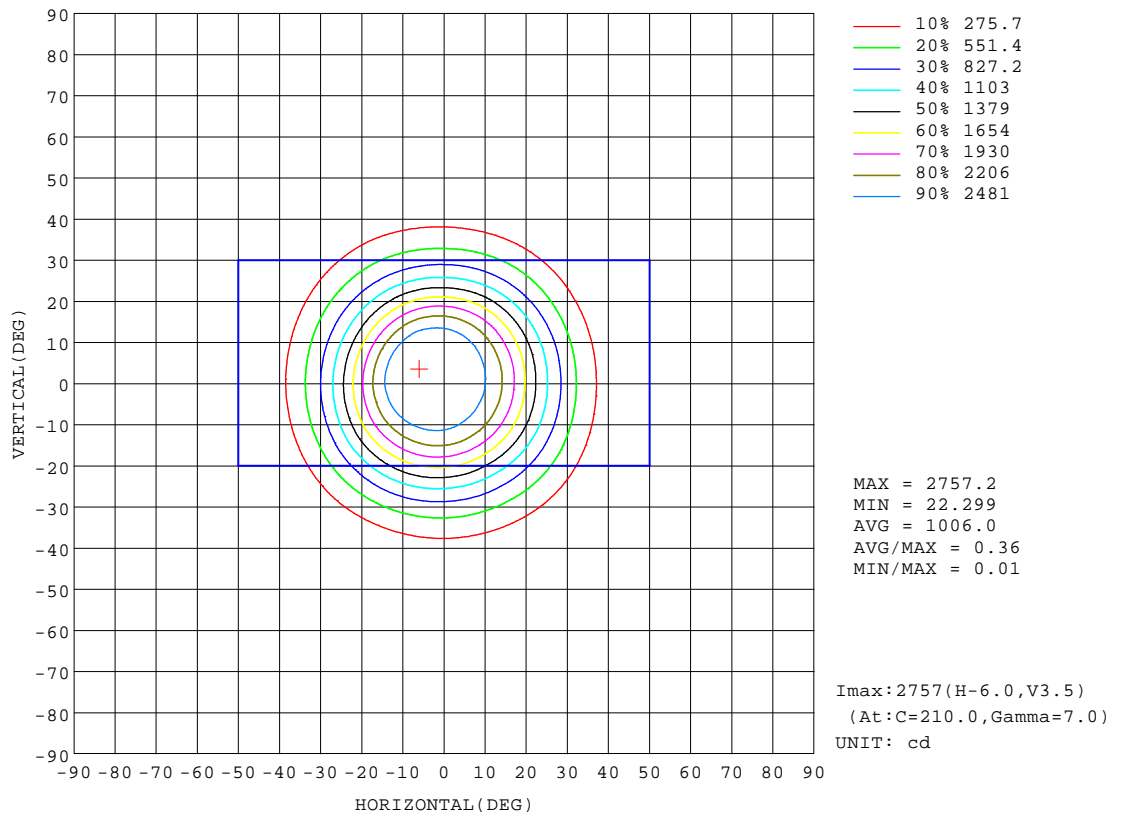
REFLECTANCE										
Ceiling	0.8	0.8	0.8	0.7	0.7	0.7	0.5	0.5	0.5	0
Walls	0.7	0.5	0.3	0.7	0.5	0.3	0.7	0.5	0.3	0
Working plane	0.2	0.2	0.2	0.2	0.2	0.2	0.2	0.2	0.2	0
ROOM INDEX	UTILIZATION FACTORS(PERCENT) $k(RI) \times RCR = 5$									
k = 0.60	79	73	70	78	73	70	78	73	70	67
0.80	85	80	77	85	80	77	84	80	77	74
1.00	89	84	81	88	84	81	87	84	81	77
1.25	93	88	85	92	88	85	90	87	84	81
1.50	95	91	88	94	90	88	92	89	87	83
2.00	97	94	91	96	93	90	93	91	89	84
2.50	99	95	93	97	94	92	94	92	90	85
3.00	100	97	95	98	96	94	95	93	92	86
4.00	102	99	97	100	98	96	97	95	94	87
5.00	103	101	99	101	99	98	97	96	95	88
ROOM INDEX	UF(total)									Direct
According to DIN EN 13032-2 2004			Suspended					SHRNOM = 1.25		

C Range: 0 - 360DEG
C Interval: 30.0DEG
Test Speed: HIGH
Temperature:25.3℃
Operators:zoe
Test Date:2025-01-02

Range: 0 - 180DEG
Interval: 1.0DEG
Test System:EVERFINE GO-SPEX500_V1 SYSTEM V2.00.461
Humidity:65.0%
Test Distance:3.160m [K=1.0000]
Remarks: LAMP:BXRE-30G10TH-A-83 Ra:90
LENS:PM-0132C 50R
NOT DRIVER:48V
30minutes warm-up

ISOCANDELA DIAGRAM

Test:U:47.997V I:0.3091A P:14.836W PF:1.0000 Freq:49.99Hz Lamp Flux:1994.65x1 lm		
NAME: OZ48-SA-HE-64	TYPE:	WEIGHT:
SPEC.: 3000K	DIM.:	SERIAL No.: 2501020008
MFR.: RISE	SUR.: 0.002826m2	Shielding Angle:

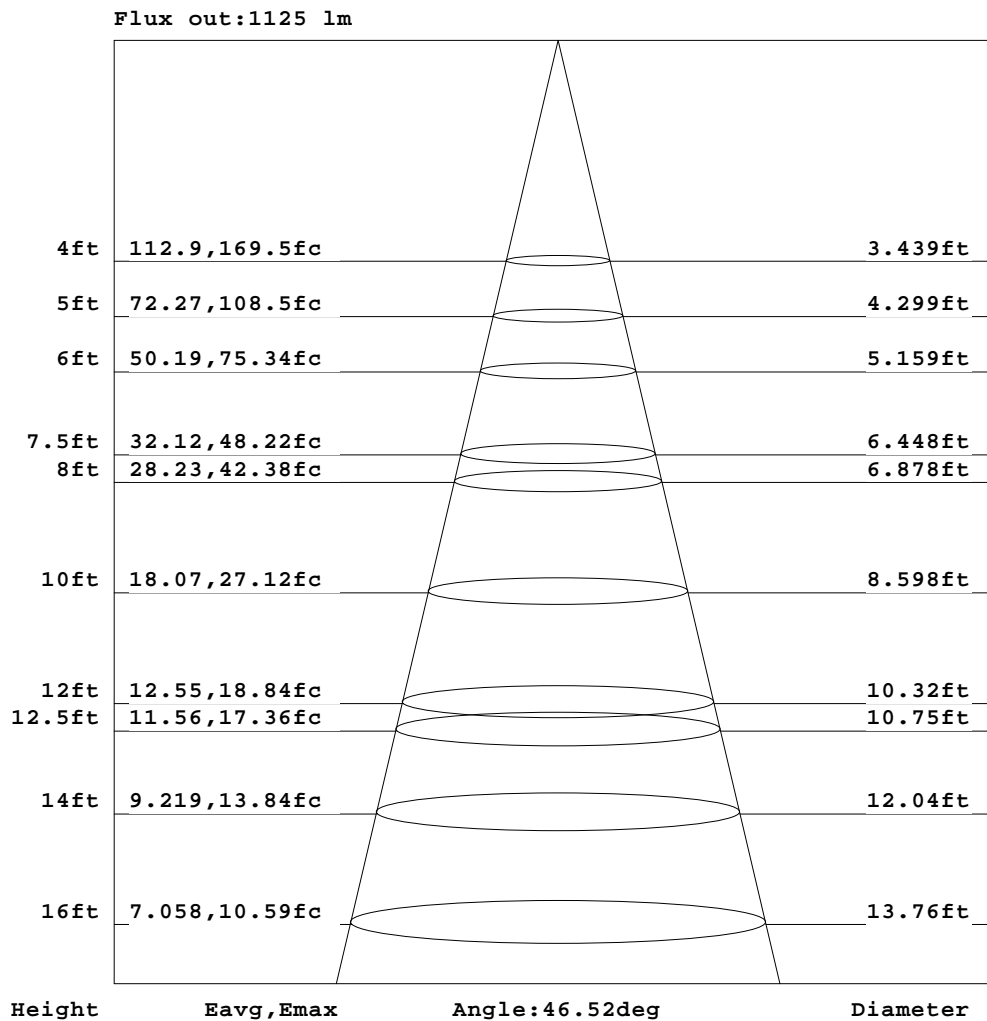


C Range: 0 - 360DEG
C Interval: 30.0DEG
Test Speed: HIGH
Temperature:25.3℃
Operators:zoe
Test Date:2025-01-02

Range: 0 - 180DEG
Interval: 1.0DEG
Test System:EVERFINE GO-SPEX500_V1 SYSTEM V2.00.461
Humidity:65.0%
Test Distance:3.160m [K=1.0000]
Remarks: LAMP:BXRE-30G10TH-A-83 Ra:90
LENS:PM-0132C 50R
NOT DRIVER:48V
30minutes warm-up

AAI Figure

Test:U:47.997V I:0.3091A P:14.836W PF:1.0000 Freq:49.99Hz Lamp Flux:1994.65x1 lm		
NAME: OZ48-SA-HE-64	TYPE:	WEIGHT:
SPEC.: 3000K	DIM.:	SERIAL No.: 2501020008
MFR.: RISE	SUR.: 0.002826m2	Shielding Angle:



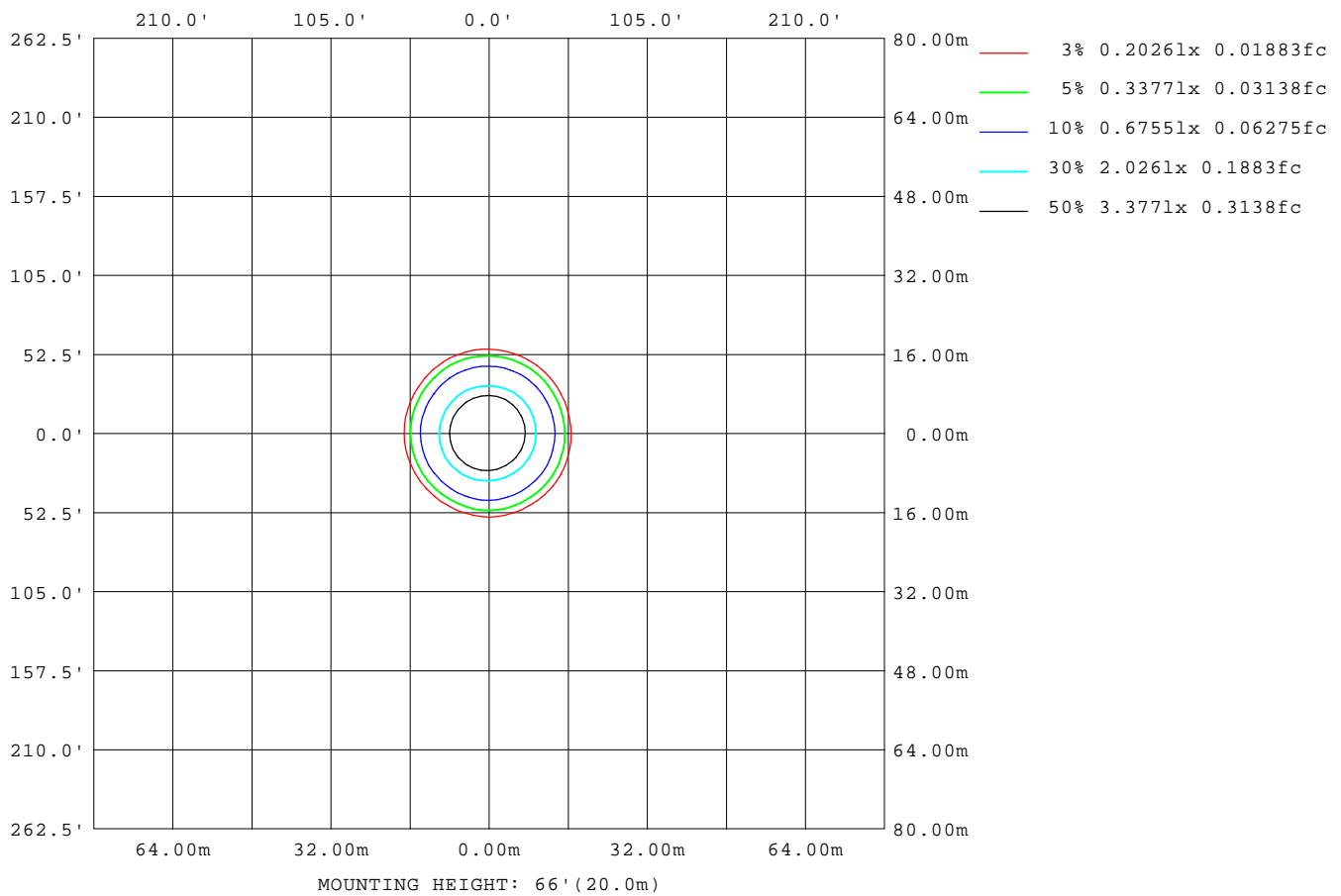
Note: The Curves indicate the illuminated area and the average illumination when the luminaire is at different distance.

C Range: 0 - 360DEG
C Interval: 30.0DEG
Test Speed: HIGH
Temperature: 25.3 °C
Operators: zoe
Test Date: 2025-01-02

Range: 0 - 180DEG
Interval: 1.0DEG
Test System: EVERFINE GO-SPEX500_V1 SYSTEM V2.00.461
Humidity: 65.0%
Test Distance: 3.160m [K=1.0000]
Remarks: LAMP: BXRE-30G10TH-A-83 Ra: 90
LENS: PM-0132C 50R
NOT DRIVER: 48V
30minutes warm-up

ISOLUX DIAGRAM

Test:U:47.997V I:0.3091A P:14.836W PF:1.0000 Freq:49.99Hz Lamp Flux:1994.65x1 lm		
NAME: OZ48-SA-HE-64	TYPE:	WEIGHT:
SPEC.: 3000K	DIM.:	SERIAL No.: 2501020008
MFR.: RISE	SUR.: 0.002826m2	Shielding Angle:



C Range: 0 - 360DEG
C Interval: 30.0DEG
Test Speed: HIGH
Temperature:25.3 °C
Operators:zoe
Test Date:2025-01-02

Range: 0 - 180DEG
Interval: 1.0DEG
Test System:EVERFINE GO-SPEX500_V1 SYSTEM V2.00.461
Humidity:65.0%
Test Distance:3.160m [K=1.0000]
Remarks: LAMP:BXRE-30G10TH-A-83 Ra:90
LENS:PM-0132C 50R
NOT DRIVER:48V
30minutes warm-up

LED Avg.L Report

Test:U:47.997V I:0.3091A P:14.836W PF:1.0000 Freq:49.99Hz Lamp Flux:1994.65x1 lm		
NAME: OZ48-SA-HE-64	TYPE:	WEIGHT:
SPEC.: 3000K	DIM.:	SERIAL No.: 2501020008
MFR.: RISE	SUR.: 0.002826m2	Shielding Angle:

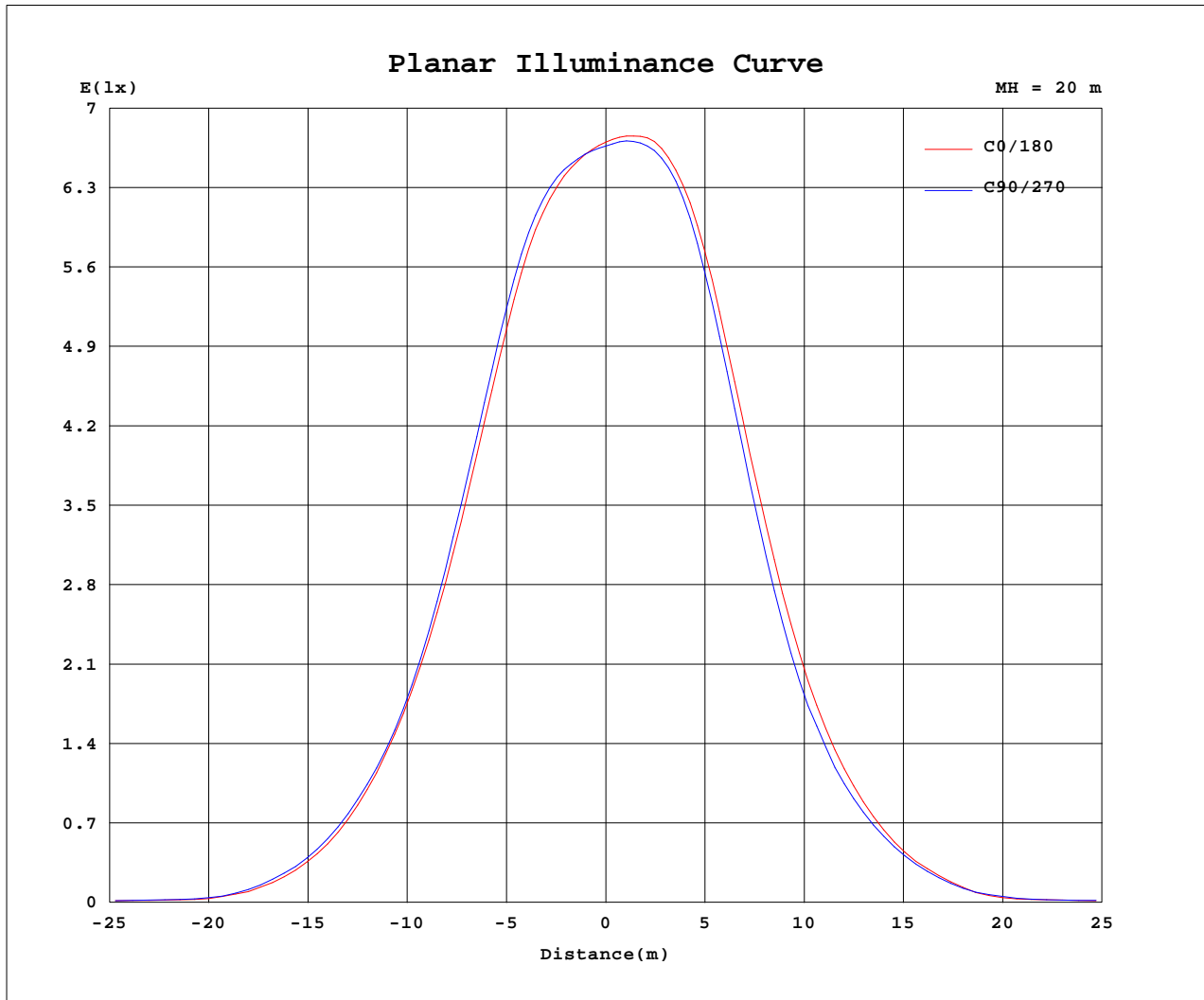
AvgL	cd/m2
L_0~180(65)av	5576
L_0~180(75)av	314
L_0~180(85)av	255
L_90~270(65)av	5753
L_90~270(75)av	363
L_90~270(85)av	238
L_45(65)av	5930
L_45(75)av	343
L_45(85)av	189

Standard: GB/T 29293-2012

C Range: 0 - 360DEG
C Interval: 30.0DEG
Test Speed: HIGH
Temperature:25.3℃
Operators:zoe
Test Date:2025-01-02

Range: 0 - 180DEG
Interval: 1.0DEG
Test System:EVERFINE GO-SPEX500_V1 SYSTEM V2.00.461
Humidity:65.0%
Test Distance:3.160m [K=1.0000]
Remarks: LAMP:BXRE-30G10TH-A-83 Ra:90
LENS:PM-0132C 50R
NOT DRIVER:48V
30minutes warm-up

Planar Illuminance Curve



C Range: 0 - 360DEG
 C Interval: 30.0DEG
 Test Speed: HIGH
 Temperature: 25.3 °C
 Operators: zoe
 Test Date: 2025-01-02

Range: 0 - 180DEG
 Interval: 1.0DEG
 Test System: EVERFINE GO-SPEX500_V1 SYSTEM V2.00.461
 Humidity: 65.0%
 Test Distance: 3.160m [K=1.0000]
 Remarks: LAMP: BXRE-30G10TH-A-83 Ra: 90
 LENS: PM-0132C 50R
 NOT DRIVER: 48V
 30minutes warm-up



LUMINOUS DISTRIBUTION INTENSITY DATA

Test:U:47.997V I:0.3091A P:14.836W PF:1.0000 Freq:49.99Hz Lamp Flux:1994.65x1 lm		
NAME: OZ48-SA-HE-64	TYPE:	WEIGHT:
SPEC.: 3000K	DIM.:	SERIAL No.: 2501020008
MFR.: RISE	SUR.: 0.002826m2	Shielding Angle:

Table--1

UNIT: cd

C(DEG) (DEG)	0	30	60	90	120	150	180	210	240	270	300	330						
0	2671	2671	2671	2671	2671	2671	2671	2671	2671	2671	2671	2671						
5	2610	2606	2615	2637	2665	2694	2722	2737	2737	2712	2675	2637						
10	2475	2468	2493	2541	2592	2651	2693	2716	2715	2667	2591	2521						
15	2119	2117	2146	2213	2290	2380	2427	2424	2416	2349	2267	2181						
20	1615	1617	1623	1699	1792	1882	1896	1874	1849	1782	1745	1675						
25	1116	1118	1104	1155	1240	1318	1314	1274	1246	1183	1180	1149						
30	701	714	699	732	778	825	826	807	776	734	740	715						
35	377	388	387	411	417	446	465	458	454	426	415	384						
40	158	169	170	184	176	195	211	206	214	195	182	165						
45	40.2	43.6	47.1	48.8	45.5	45.1	49.7	61.7	60.0	61.1	47.0	43.3						
50	28.4	30.3	31.2	30.2	30.1	29.7	29.4	32.2	33.2	31.3	30.2	29.5						
55	23.3	24.9	25.3	24.6	24.7	24.2	23.8	25.3	26.1	24.9	25.0	24.4						
60	15.1	16.0	16.2	15.6	15.4	14.8	14.6	15.4	16.1	15.5	15.9	15.7						
65	6.83	7.06	7.23	6.85	6.95	6.57	6.49	6.95	7.32	6.90	7.18	7.11						
70	2.62	2.76	2.82	2.53	2.72	2.53	2.42	2.72	2.80	2.44	2.83	2.83						
75	0.26	0.34	0.27	0.28	0.24	0.22	0.20	0.19	0.21	0.25	0.27	0.25						
80	0.09	0.07	0.07	0.08	0.07	0.07	0.07	0.06	0.06	0.07	0.06	0.06						
85	0.07	0.05	0.05	0.06	0.05	0.05	0.06	0.05	0.05	0.06	0.04	0.04						
90	0.00	0.00	0.00	0.00	0.00	0.00	0.00	0.00	0.00	0.00	0.00	0.00						
95	0.00	0.00	0.00	0.00	0.00	0.00	0.00	0.00	0.00	0.00	0.00	0.00						
100	0.00	0.00	0.00	0.00	0.00	0.00	0.00	0.00	0.00	0.00	0.00	0.00						
105	0.00	0.00	0.00	0.00	0.00	0.00	0.00	0.00	0.00	0.00	0.00	0.00						
110	0.00	0.00	0.00	0.00	0.00	0.00	0.00	0.00	0.00	0.00	0.00	0.00						
115	0.00	0.00	0.00	0.00	0.00	0.00	0.00	0.00	0.00	0.00	0.00	0.00						
120	0.00	0.00	0.00	0.00	0.00	0.00	0.00	0.00	0.00	0.00	0.00	0.00						
125	0.00	0.00	0.00	0.00	0.00	0.00	0.00	0.00	0.00	0.00	0.00	0.00						
130	0.00	0.00	0.00	0.00	0.00	0.00	0.00	0.00	0.00	0.00	0.00	0.00						
135	0.00	0.00	0.00	0.00	0.00	0.00	0.00	0.00	0.00	0.00	0.00	0.00						
140	0.00	0.00	0.00	0.00	0.00	0.00	0.00	0.00	0.00	0.00	0.00	0.00						
145	0.00	0.00	0.00	0.00	0.00	0.00	0.00	0.00	0.00	0.00	0.00	0.00						
150	0.00	0.00	0.00	0.00	0.00	0.00	0.00	0.00	0.00	0.00	0.00	0.00						
155	0.00	0.00	0.00	0.00	0.00	0.00	0.00	0.00	0.00	0.00	0.00	0.00						
160	0.00	0.00	0.00	0.00	0.00	0.00	0.00	0.00	0.00	0.00	0.00	0.00						
165	0.00	0.00	0.00	0.00	0.00	0.00	0.00	0.00	0.00	0.00	0.00	0.00						
170	0.00	0.00	0.00	0.00	0.00	0.00	0.00	0.00	0.00	0.00	0.00	0.00						
175	0.00	0.00	0.00	0.00	0.00	0.00	0.00	0.00	0.00	0.00	0.00	0.00						
180	0.00	0.00	0.00	0.00	0.00	0.00	0.00	0.00	0.00	0.00	0.00	0.00						

C Range: 0 - 360DEG
C Interval: 30.0DEG
Test Speed: HIGH
Temperature:25.3℃
Operators:zoe
Test Date:2025-01-02

Range: 0 - 180DEG
Interval: 1.0DEG
Test System:EVERFINE GO-SPEX500_V1 SYSTEM V2.00.461
Humidity:65.0%
Test Distance:3.160m [K=1.0000]
Remarks: LAMP:BXRE-30G10TH-A-83 Ra:90
LENS:PM-0132C 50R
NOT DRIVER:48V
30minutes warm-up